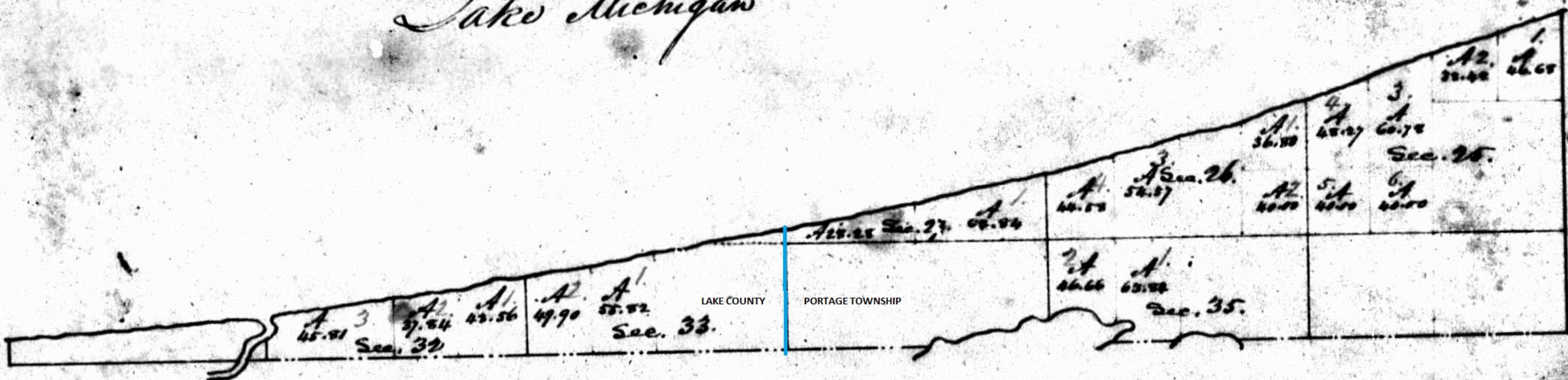


Township N. 37 N. Range N. 7 W. D. 2 Mer.

Lake Michigan



Rec. June 2^d 1834

The foregoing subdivisions of fractional sections are truly
 Copied from the original plat in this office.
 Surveyor General's Office }
 Cincinnati, May 23^d 1834. } M. T. Williams
 Sur. Genl

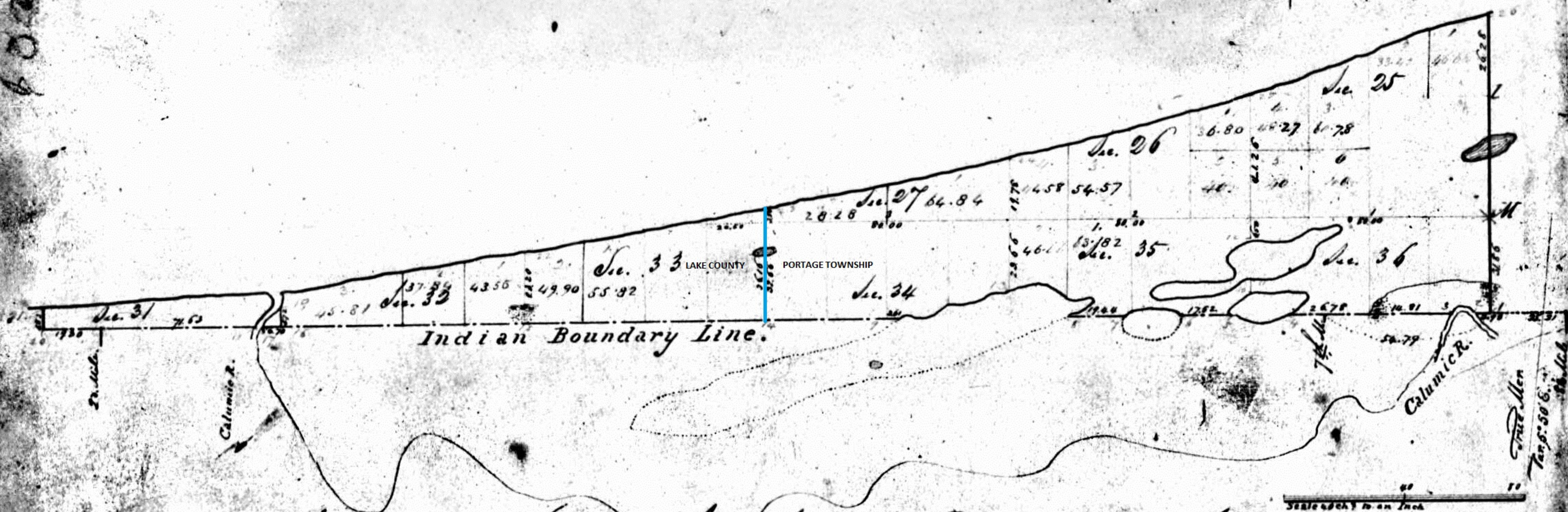
Township N.° XXXVII North, Range N.° VII West 2nd Mer.

INDIANA!
N & W 2 P. M.

IND

Contents		
Section	Acres	Acres
NE 25		81.10
E part NW		100.78
W part		88.27
SE		160
E part SE 26		76.81
NW		65.40
SW		99.15
E part SW		91.12
W part		80.51
SE part		2.88
E part SE 32		127.31
E part SE 33		69.26
NW		62.57
SW		105.72
E part SE 34		51.80
NW		60.65
E part NW		65.03
NW		65.22
NE 35		112.77
NW		110.50
E part NE 36		62.50
NW		64.25
SW		88.85
Total		1,867.01

LAKE MICHIGAN.



Surveyed in April 1830 by Calvin Britain D.S.

Surveyor for Office Vincennes
July 9th 1830

This is a certified copy from the
original in this office.

Wm. Cutler Secy.

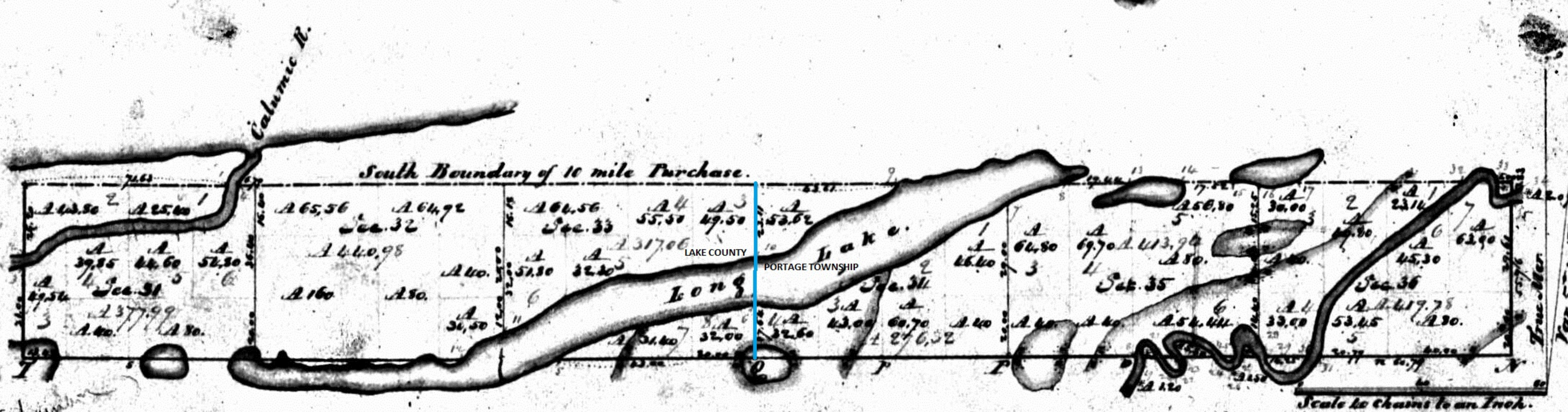
Annotated by Steven R. Shook, December 2013

Bound Harrison

Township N. 37 N. Range N. 7 W. 2nd Mer.

Bound this edge

INDIANA.
N. & W. 2 P. M.



Total number of Acres 224,607

Surveys designated	By whom surveyed	Date of Contract	Acres of surveys	When surveyed	When pt for & ad in due Gov't's acc.
Township lines	Hilly & Clark	29 June 1833	7 - 27	1. yr. 1834	2. yr. 1834
Subdivisions	Andrew Burnside	21 April 1834	4 - 57	1. yr. 1834	1. yr. 1836

The above map of Township N. 37 North, of Range N. 7 West of the 2nd Principal Meridian, Indiana, is strictly conformable to the field notes of the survey thereof, on file in this Office, which have been approved.

Surveyor General's Office
 Wm. S. Lytle, Surveyor General

Meanders of Calumic River & Long Lake.			Meanders of Small Lake in Secs. 35 & 36		
Pole	Course	Ch. & Sec.	Pole	Course	Ch. & Sec.
	Right Bank.				
1	S 10 E	5.81	17	S 72 W	16.00
			18	S 61 W	4.58
2	N 9 1/2 E	11.30	16	S 82 W	15.00
			15	S 25 E	3.00
3	N 20 E	15.00	13	S 63 E	10.00
4	N 55 E	11.00			
5	N 50 E	15.00			
6	N 57 1/2 E	30.00			
7	N 19 E	2.00			
8	N 72 E	6.00			
9	S 24 E	4.16			
10	S 8 E	6.00			
11	N 63 1/2 E	4.70			
	Left Bank				
12	S 52 W	5.00			
13	N 35 W	7.00			
14	N 20 E	3.60			
15	N 50 W	2.00			
16	S 62 1/2 W	2.18			
17	S 55 W	20.00			
18	S 57 W	15.00			
19	S 82 W	21.00			
20	S 15 W	20.00			
21	S 1 E	5.25			
	Right Bank.				
22	N 11 W	5.00			
23	N 60 E	8.00			
24	S 27 E	6.00			
25	S 14 E	3.73			
26	N 30 W	5.00			
27	N 35 E	5.00			
28	S 86 E	7.00			
29	S 26 E	5.00			
30	S 76 E	2.00			
31	S 11 E	3.66			
32	N 30 W	6.00			
33	N 21 E	7.00			
34	S 77 E	4.00			
35	S 23 E	8.00			
	Left Bank down				
36	N 24 W	6.00			
37	S 24 W	5.70			
38	N 40 W	3.00			
39	N 64 W	5.00			
40	S 80 W	4.00			
41	South	2.00			
42	S 45 E	3.87			
43	N 23 W	5.00			
44	N 38 W	3.00			
45	S 9 W	2.76			
46	S 23 W	2.00			
47	S 47 W	2.00			
48	S 67 W	16.50			
49	N 36 W	1.00			
50	S 76 W	2.00			
51	N 74 W	3.00			
52	S 82 W	17.00			
53	S 64 W	15.00			
54	S 58 W	2.00			
55	S 7 W	1.70			
	Right Bank down				
56	S 71 E	2.00			
57	N 68 E	7.00			

Annotated by Steven R. Shook, December 2013

Meandered Course

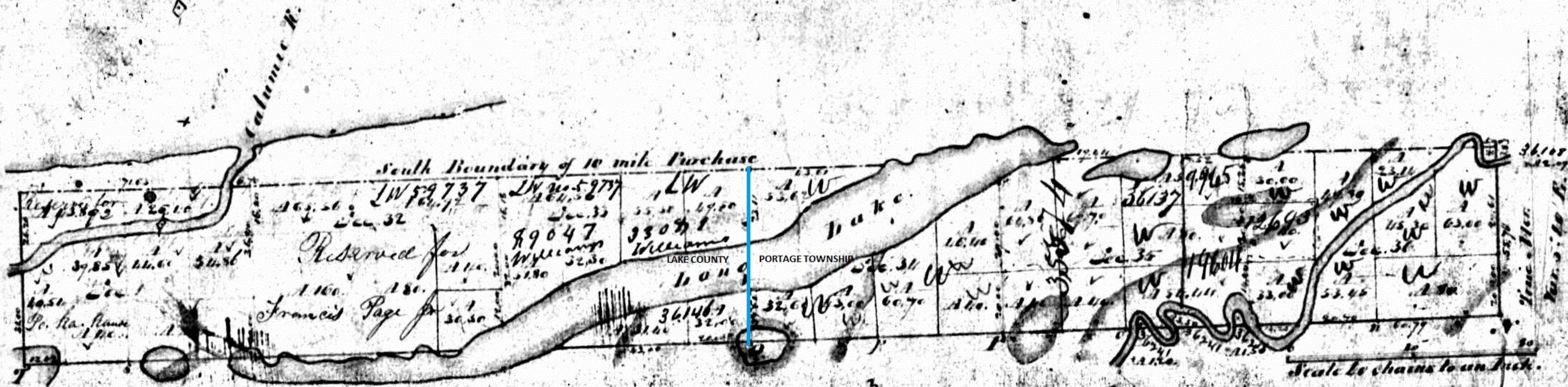
Robert S. Lytle

Township N. 11 W. 1 Range N. 7 W. 2nd Mer.

Annotated by Steven R. Shook, December 2013

Reserved for
Mr. W. B. Bunt

State, Oct 28th September 1850. Sec. 22



Surveyed in 1851 by Andrew Burnside D.V.

This above plat is a true copy of the Original
on file in this Office
Surveyor General's Office
Cincinnati April 2nd 1851

Offered at Public Auction 7 Decr. 1850

524.44
27.32
40
67.56

67.56
40.00
27.56
67.56

[Handwritten signature]

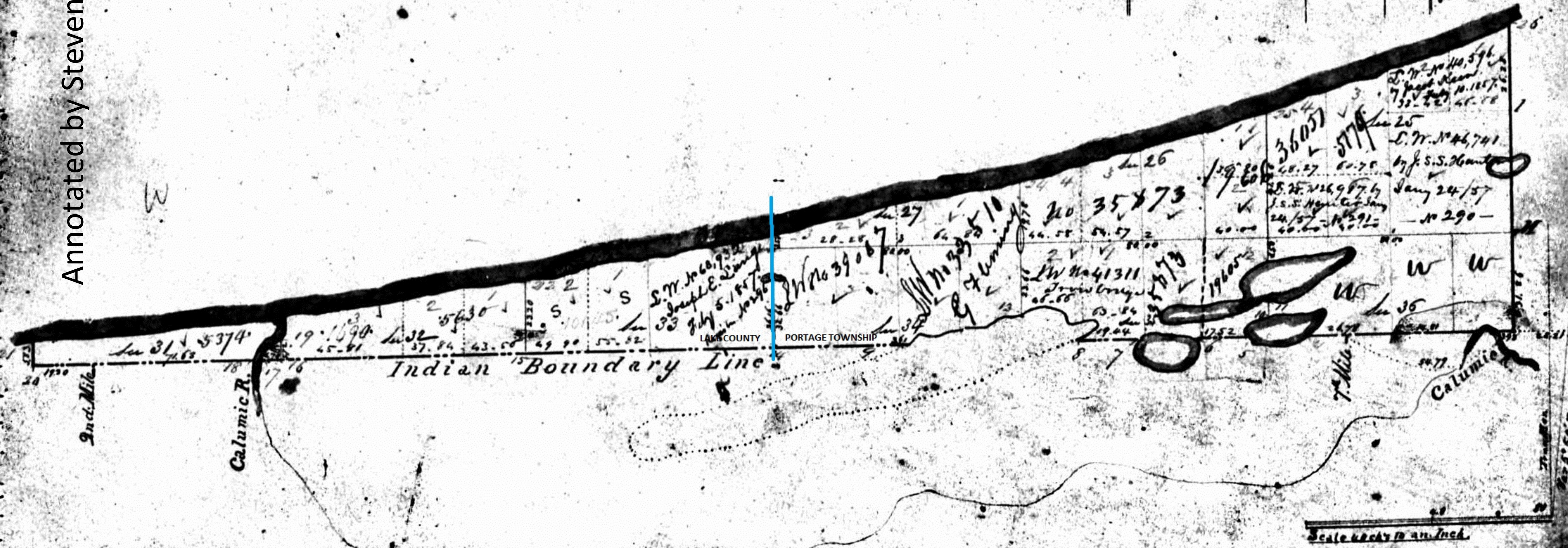
Township N^o XXVII North, Range N^o VII West 2nd Mer.

Annotated by Steven R. Shook, December 2013

LAKE MICHIGAN.

Contents		
Sections	area	n ^o
SE 25	80	10
E 1/2 NW	100	78
W 1/2 SE	88	27
SE 26	160	
E 1/2 SE 26	76	80
W 1/2	65	40
SW	99	15
W 1/2 SW	93	12
W 1/2 SW	64	51
SE 1/4	2	88
W 1/2 SW	127	21
E 1/2 SE 33	69	00
W 1/2	62	50
NW	115	72
E 1/2 SE 34	51	80
W 1/2	60	65
E 1/2 NW	65	05
W 1/2	63	22
SE 35	102	77
NW	110	50
E 1/2 SE 36	62	50
W 1/2	64	35
NW	88	85
Total	1867	01

6540
 9915
 16450
 2157 1/2
 5138
 11201
 13020
 2828
 11263
 5138
 5138



Surveyed in 1830 April by Calvin Britain D.S.
 A true copy of the original plat filed in this office
 Surveyor General's office
 Offered for Sale Nov. 1830 13th July 1830
 M. S. S. S.