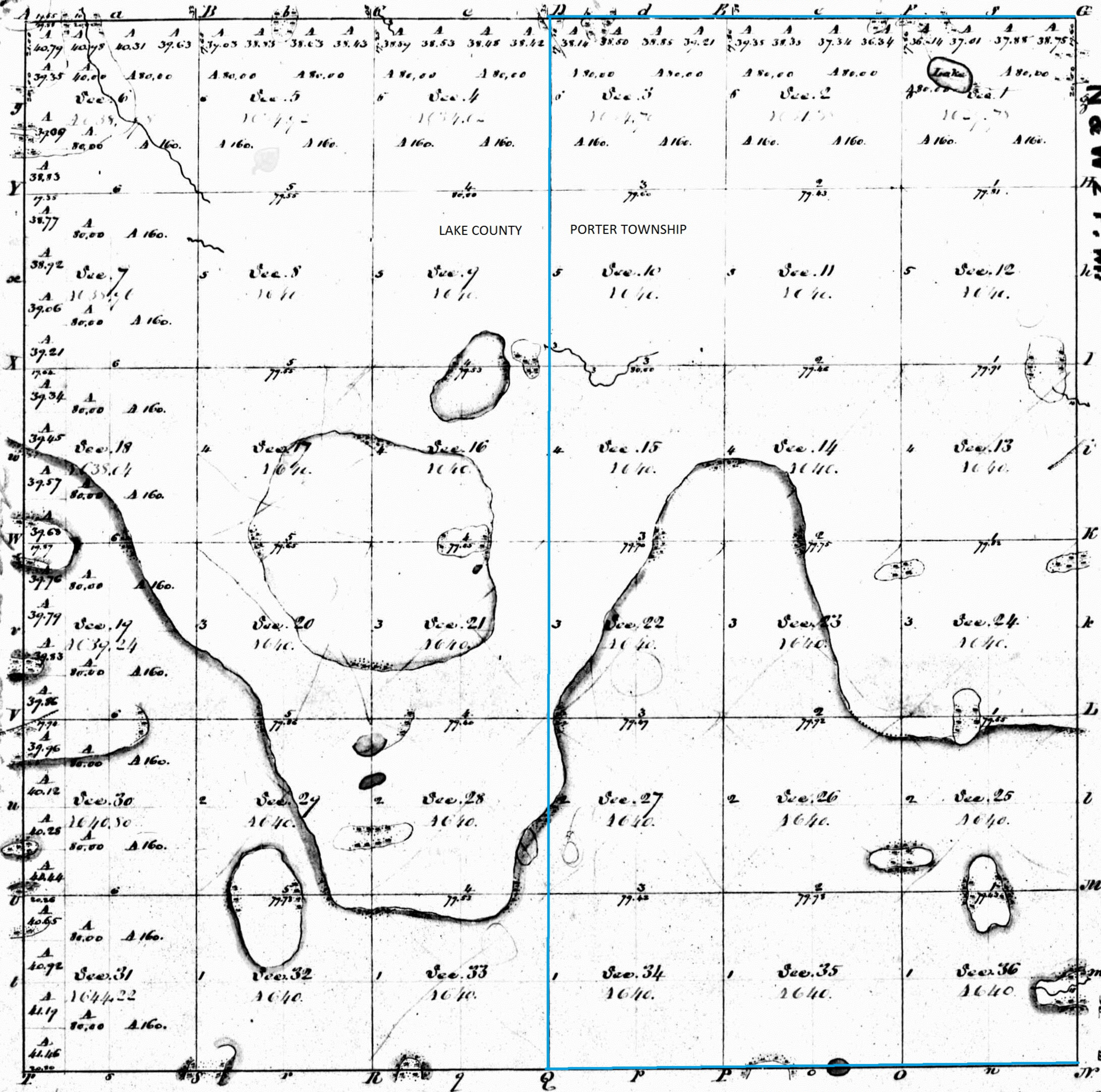


Township N: 34 North, Range N: 7 West 2nd Mer.

UNION TOWNSHIP



INDIANA.
N & W 2 P. M.

Annotated by Steven R. Shook, December 2013

Survey Designation	By whom Surveyed	Date of Contract	Acres of Survey	When Surveyed	When Sub. & Est.
Subdivision	William Clark	21. Apr. 1834	M. S. L.	5 th q. 1834	1 st q. 1835
Lower lines	Libby & Clark	June 1833	22. 00. 75	1. 7. 1834	2 nd 1834

The above map of Township N: 34 N. Range N: 7 West 2nd Meridian (Indiana) is strictly conformable to the field notes of the survey thereof on file in this office, which have been examined and approved Surveyor General's Office Cincinnati April 26th 1836.

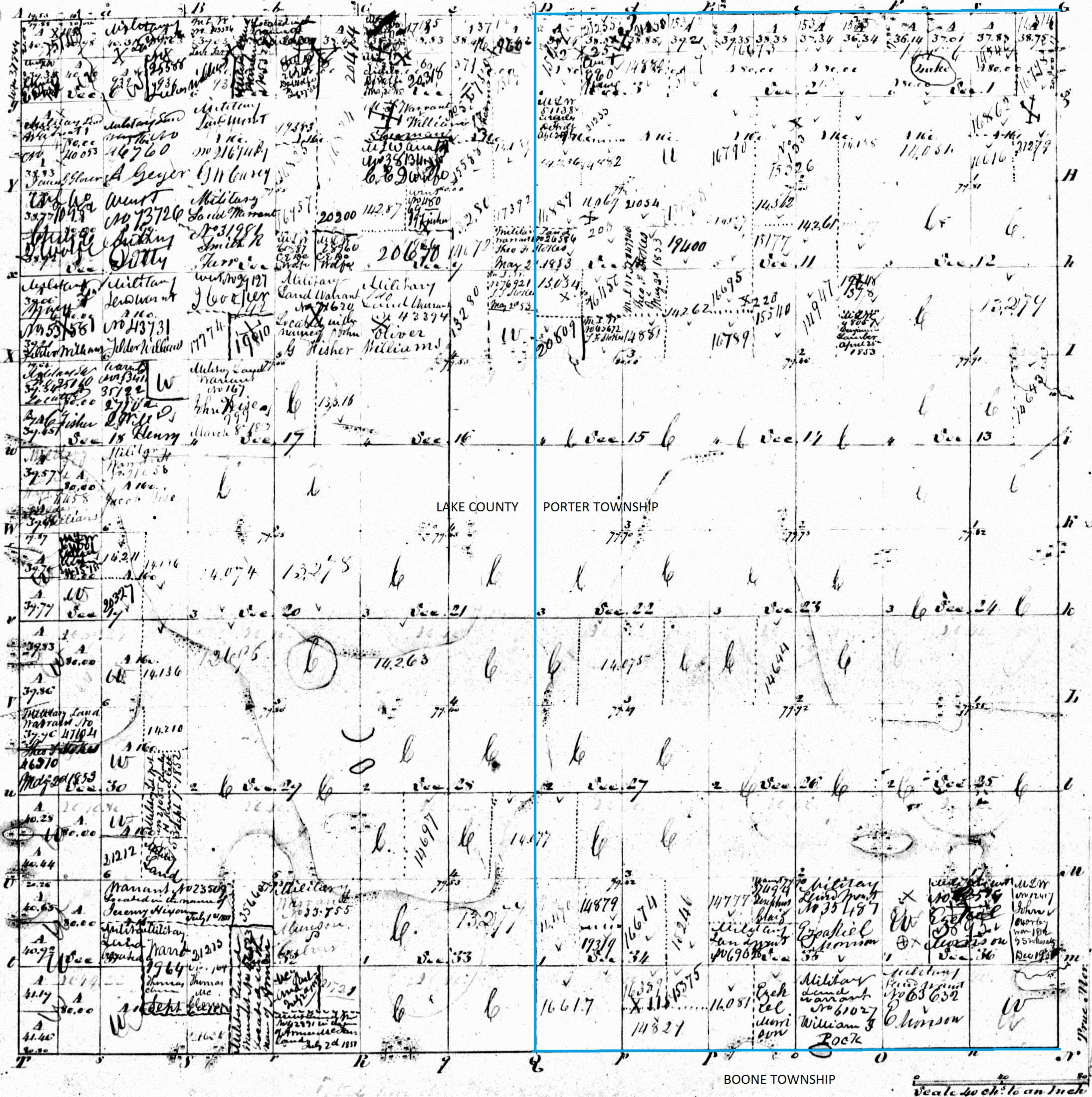
Robt. S. Lytle Sur. Gen.
by Sam. McLean

Robt. S. Lytle

IND

Township 1: 34. North, Range 1: 7 West 2nd. Mer.

UNION TOWNSHIP



Copy of Public Sale the 2nd day of March 1850
 Sections 1 2 3 4 5 6 7 8 9 10 11 12 13 14 15 16 17 18 19 20
 21 22 23 24 25 26

State, Oct 28th September 1850. See W

Annotated by Steven R. Shook, December 2013

Surveyed by W. Clarke in 1834

The above plat is truly copied from
 the original Ba file in this office.
 Surveyor General's Office
 Cincinnati, April 26th 1836. *W. M. Smith*