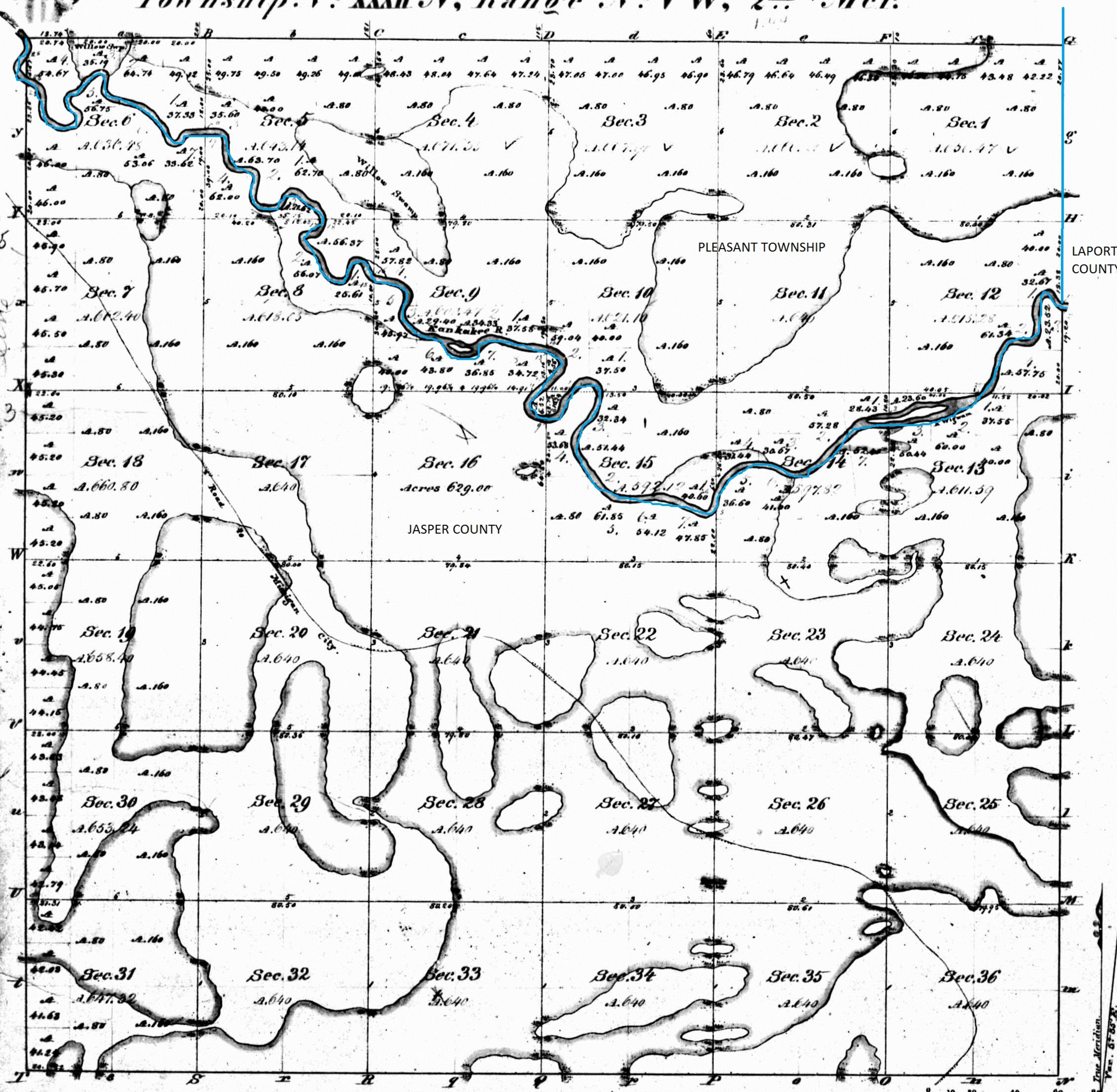


Township N<sup>o</sup> XXXII N, Range N<sup>o</sup> V W, 2<sup>nd</sup> Mer.



Meanders of Kankakee River.

Post	Courses	(Ch <sup>o</sup> Lk <sup>o</sup> )	Post	Courses	(Ch <sup>o</sup> Lk <sup>o</sup> )	Post	Courses	(Ch <sup>o</sup> Lk <sup>o</sup> )
10.	N 61° W	7.00	10.	S 66° W	5.00			
	N 60° W	3.50		S 33° W	4.50			
	N 20° W	4.00		N 20° W	4.00			
	N 84° W	5.50		N 44° W	9.00			
	S 36° W	4.00		N 61° W	9.50			
	S 13° W	4.00		N 56° W	5.00			
	S 17° W	2.50		N 72° W	10.50			
	S 14° E	6.00		N 36° W	3.50			
	S 20° E	2.50		N 19° E	2.50			
	S 15° W	2.50		N 18° E	3.00			
	S 33° W	4.50		N 15° W	2.50			
	N 74° W	4.00		N 75° W	4.50			
	N 64° W	5.50		N 80° W	5.00			
	S 48° W	6.00		S 82° W	4.50			
	S 16° W	17.00		S 52° W	4.50			
	S 47° W	4.00		N 66° W	7.00			
	S 36° W	5.08		N 75° W	6.00			
22.	S 39° W	6.00		N 66° W	3.50			
	S 87° W	4.00		N 82° W	7.50			
	S 74° W	8.50		N 44° W	5.00			
	S 89° W	10.00		N 26° W	7.50			
	S 66° W	9.50		N 10° E	4.00			
	S 81° W	3.00		N 56° E	3.00			
	S 77° W	2.56		N 18° W	5.00			
	S 75° W	11.00		N 38° W	4.50			
	S 58° W	9.00		N 67° W	3.50			
	S 49° W	21.50		N 82° W	8.00			
	S 44° W	5.00		N 65° W	4.41			
	S 65° W	2.50		N 37° W	3.00			
	S 83° W	2.50		N 13° W	2.50			
	N 81° W	6.50		North	2.00			
	N 70° W	5.00		N 30° W	6.50			
	N 44° W	3.00		N 42° W	3.50			
	West	7.00		S 22° W	7.50			
	S 70° W	6.50		S 77° W	4.00			
	S 77° W	7.00		N 32° W	5.00			
	S 38° W	8.50		N 18° W	5.00			
	S 15° W	2.22		N 41° W	8.00			
6.	S 12° W	2.51		N 50° W	6.50			
	S 2° W	4.50		North	1.00			
	S 55° W	3.50		East	1.00			
	N 45° W	5.00		S 63° E	2.00			
	N 87° W	3.00		N 66° E	4.50			
	N 68° W	5.00		N 22° E	5.00			
	N 82° W	9.00		N 76° E	2.30			
	N 77° W	5.50		N 3° E	2.50			
	S 86° W	14.50		N 40° W	4.00			
	N 74° W	6.50		N 62° W	4.50			
	N 41° W	6.00		N 38° W	5.00			
	N 11° W	6.00		N 58° W	6.50			
	N 32° W	6.00		S 49° W	4.50			
	N 20° W	7.00		S 22° W	5.00			
	North	4.50		S 71° W	5.00			
	N 28° E	5.00		N 72° W	5.00			
	N 62° E	4.00		N 41° W	4.00			
	N 30° E	4.50		North	10.00			
	N 12° E	8.00		N 49° W	5.00			
	N 21° W	2.18		S 32° W	4.50			
8.	N 22° W	3.00		N 61° W	1.00			
	N 53° W	4.00		N 25° W	4.50			
	S 88° W	4.00		N 80° W	7.00			
	S 60° W	6.50		N 34° E	1.50			
	S 42° W	2.65		N 19° W	4.50			
7.	S 43° W	2.50		North	2.50			
	S 9° W	4.50		N 73° W	6.50			
	South	5.00		S 79° W	2.50			
	S 75° W	4.50		S 77° W	3.76			
	N 69° W	3.45		Well	5.50			
20.								

Total number of Acres 22,945.71

Surveys Designated	By Whom Surveyed	Date of Contract	Amount of Surveys	When Surveyed	When p <sup>d</sup> for and ch <sup>d</sup> in the Sur <sup>r</sup> Gen <sup>l</sup> acc <sup>t</sup>
Subdivision.	A. S. Vannest	24 <sup>th</sup> Feb. 1834	M. Ch <sup>o</sup> Lk <sup>o</sup> 70 . 63 . 79	4 <sup>th</sup> of 1834	4 <sup>th</sup> of 1834
Township lines.	Sibley & Clark	29 <sup>th</sup> June 1833	24 . 03 . 07	1 <sup>st</sup> of 1834	2 <sup>nd</sup> of 1834

The above Map of Township N<sup>o</sup> 32 North, of Range N<sup>o</sup> 5 W of the 2<sup>nd</sup> Principal Meridian (Indiana) is strictly conformable to the field notes of the survey thereof on file in this Office, which have been examined and approved.

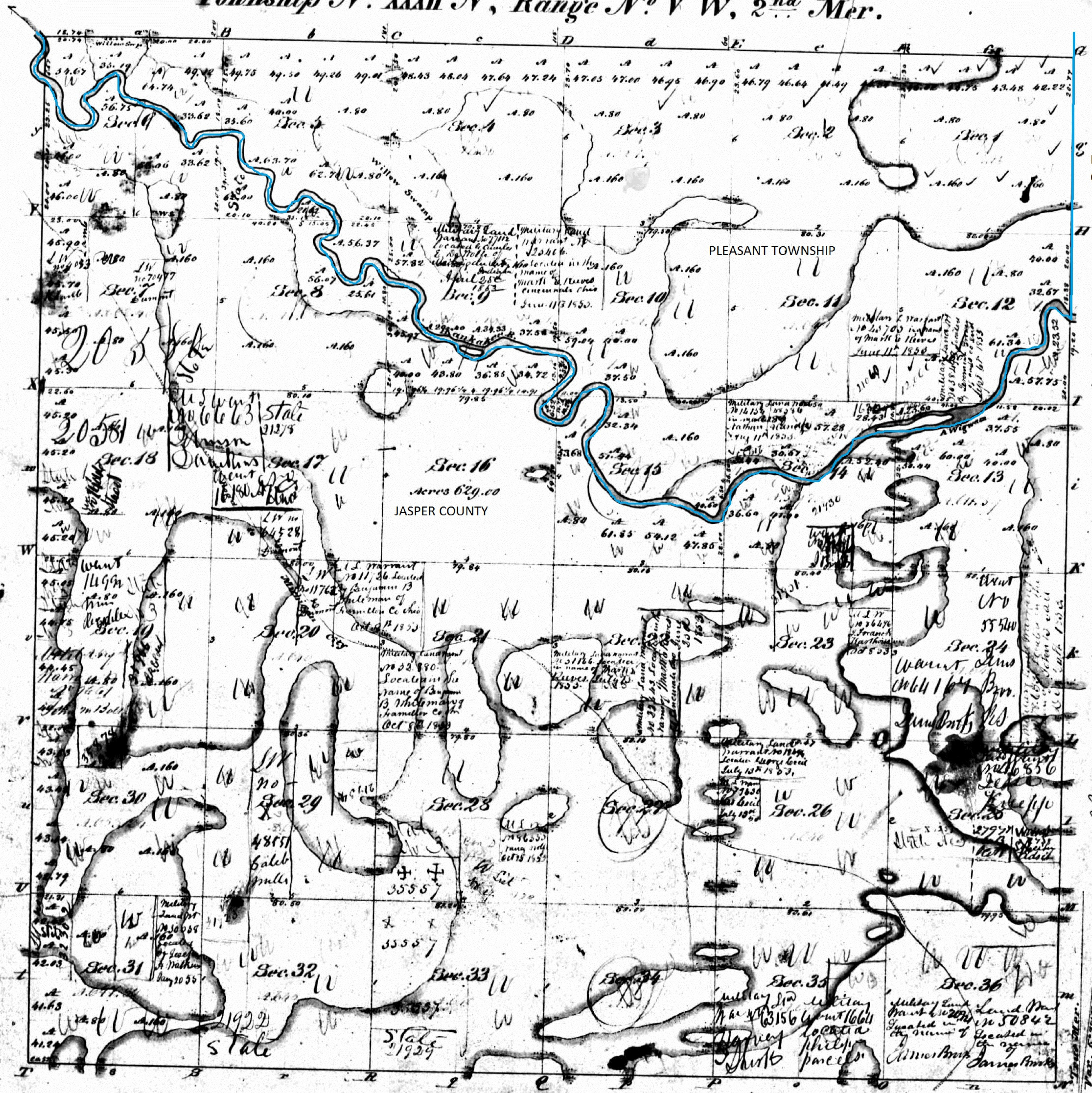
Surveyor General's Office,  
Cincinnati, Mar. 30. 1835

M. T. Williams  
Sur. Genl.

INDIANIA  
N & W 2 P. M.

Compared over on the back of the Map.

Township N<sup>o</sup> XXXII N, Range N<sup>o</sup> V W, 2<sup>nd</sup> Mer.



LAPORTE COUNTY

Annotated by Steven R. Shook, December 2013

Offered as Public Sale on 5<sup>th</sup> day of December 1838.

State Oct 28th September 1850. do do

Surveyed in 1834 by A. E. Van Ness

The above map is a true copy from the original, on file in this office. Surveyor General's Office, Cincinnati, April 21<sup>st</sup> 1836. B. S. M. 1/27th 1/3